



Product Information

This furniture has been handcrafted from Indian Hardwood, a medium hardwood rich in character. Each piece is handmade using traditional methods and roots producing singular pieces, unique to its owner.

The Characteristics of real wood

(Fig 1) You may find differences in wood grain appearance, this is a natural effect created during the maturing process.

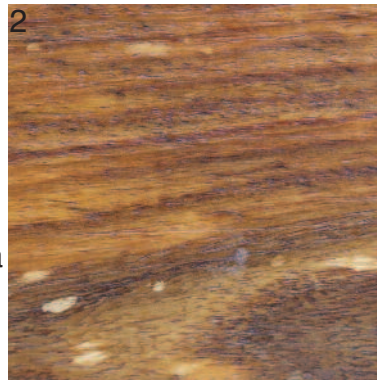
As the tree grows, the older sections in the tree develop thicker, clearer grain patterns.

Your furniture may be made from several cuttings of the same tree, creating the contrast of markings.



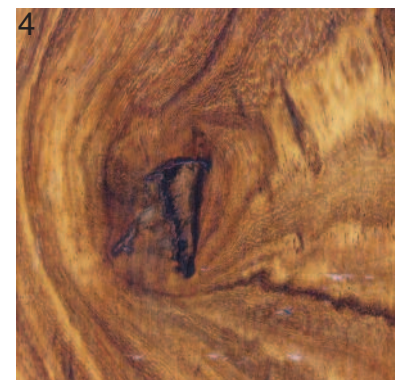
(Fig 2-3) Shows a section of sapwood common in most timbers, which you may find randomly throughout your furniture.

Sapwood and random pigmentation are a common marking in real wood and not to be seen as a defect.



(Fig 4) Knotting is the most common of markings and is the fingerprint of natural wood.

These vary in size and occur frequently in natural wood products. This is why every piece of our furniture is unique, no two pieces will be quite the same, unlike mass produced veneered or foil laminated furniture.



(Fig 5) Pin markings are also a distinguishing feature of hand made furniture. These will appear irregularly wherever the craftsmen requires additional bonding and support.

You will notice this is also a common characteristic in antique furniture.



Care Instructions - Sheesham, Oak, Acacia & Mango Furniture

- As the surface has a natural wax finish great care should be taken to avoid any liquids being spilt onto the surface as this may mark the furniture. Any spills should be wiped away immediately using a dry cloth and the surface re-waxed as required.
- Always use protective coasters or mats. Do not place cups, glasses or hot items directly onto the surface as this can cause permanent damage.
- Avoid exposing the furniture to excessive heat or direct sunlight as this can cause cracking and discolouration of the timber.
- Do not use silicone based aerosol polish as this will remove the natural wax. Never use a damp cloth as this may also remove part of the wax coating.
- For everyday care, wipe with a dry cloth or duster. To achieve a premium finish, regularly apply a natural beeswax polish, using a dry cloth and buff up ensuring any excess wax is removed.

Care Instructions - Stone Sheesham Furniture

- Always use protective coasters or mats. Do not place cups, glasses or hot items directly onto the surface as this can cause permanent damage.
- Avoid exposing the furniture to excessive heat or direct sunlight as this can cause cracking and discolouration of the timber.
- Do not use silicone based aerosol polish or any other form of wax as this will penetrate the timber and change the colour as all Stone Sheesham Furniture has no finish applied to it, the furniture is simply bare wood.
- For everyday care, wipe with damp cloth and then a dry cloth or duster. Should you get any marks on the surface of the furniture you can give it a light sand with medium sandpaper and wipe with a dry cloth or duster.